

**TŌKU MĀPIHI MAUREA
KURA KAUPAPA MĀORI
2020**



Te Koromakinga:

Tōku reo,
Tōku ohooho,
Tōku reo,
Tōku māpihi maurea,
Tōku reo,
Tōku whakakai mārihi.

Tirohanga Whānui:

Kia eke ai te tamaiti ki tōna taumata.

He whakamārama:

He Kura Kaupapa Māori a Tōku Māpihi Maurea Kura Kaupapa Māori i raro i te Education Act 1989, he kura S155 hoki.

I whakatū tēnei kura i runga i te whakaaro mā te whakaako mā te huarahi o te reo Māori, mā ngā tikanga Māori hoki ngā mahi whakahaere, mā ngā tirohanga Māori hoki ka tū pakari ngā tamariki i roto i te ao kikokiko nei.

Ko ngā whakapono:

E whakapono ana te kura:

- Ⓞ ki ngā mātāpono o Te Aho Matua
- Ⓞ ka taea e ngā tamariki katoa te ako
- Ⓞ mā te mahi ngātahi o te kura me te whānau ka eke ngā tamariki ki ngā taumata
- Ⓞ mā te huarahi o te reo Māori me ngā tikanga ka tū pakari ngā tamariki i roto i te ao kikokiko nei.

Ko ngā uara:

- Ⓞ Aroha – Aroha atu, aroha mai.
- Ⓞ Whakaute - Tamaiti ako ki te kāinga, tūngia ki te kura, ki te marae, tau ana.
- Ⓞ Pono me te tika - Mā te tika, mā te pono me te aroha e.
- Ⓞ Whanaungatanga – Anō te pai te āhuareka, o te nohonga o ngā teina me nga tuākana.
- Ⓞ Manawa Roa - Whaiā te iti kahurangi ki te tūohu koeme he maunga teitei.

Ko ngā iwi:

- Ⓢ Ko Ngati Haua, ko Ngati Wairere ngā tāngata whenua. Nō rātou te mana whenua.
- Ⓢ Ka hāpai te kura i ngā tikanga o Ngāti Wairere, o Ngati Haua hoki.
- Ⓢ Mai i te tirohanga ahurea Māori tūturu ka whakaaro nui te kura ki ngā tikanga me ngā mātauranga o ētehi atu.

Whakawhiti kōrero ki te taha o te whānau:

He Poari Matua tō te kura, arā, ko ngā ringaringa o te whānau. E tuwhera ana ngā hui Poari ki te whānau. Kaha hoki te Poari ki te whai whakaro mai i te whānau e pā ana ki ngā kaupapa motuhake.

E kaha ana a Tōku Māpihi Maurea Kura Kaupapa Māori ki te mahi ngātahi ki te taha o te whānau ahakoa he aha te take.

Tō tātou hāpori:

I te tau 1993 i whakaritea e ngā whānau o ngā kōhanga reo o Ngā Kuaka, Tōku Māpihi Maurea me Te Amokura kia whakatū ai i tētahi kura kaupapa Māori mō ngā tamariki e puta ana i ēnei kōhanga reo. E rua tau noho mai tēnei kura i tētahi whare o Te Kaunihera o Kirikiriroa i te huarahi o Pembroke i te tāone. He kura tūhāhā tēnei, ara, kāore i whai pūtea mai i te Kāwanatanga ki te whakahaere te kura.

I tuwhera mai i te huarahi o Silverdale i te **24 o Paenga-whāwhā i te tau 1995**, e tata ana ki Te Whare Wānanga o Waikato. Ko te nuinga o ngā tamariki e ahu tonu mai ana i ngā kōhanga reo tautoko o te kura, ara, mai i a Ngā Kuaka me Tōku Māpihi Maurea. I tua atu o tēnā, nō ngā hau e whā ngā whānau.

I tēnei wā 108 ngā tamariki Tau 1-8. I haere mai ngā tamariki mai i ngā tōpito katoa o Kirikiriroa, ruarua noa iho ka noho tata ki te kura. Ko te nuinga o ngā tamariki ka noho ki te kura mai i te rima tau te pakeke tae noa ki te 12-13 tau te pakeke. Ko te 100% o ngā tamariki he Māori, heoi ka whakapapa atu te nuinga ki ētehi anō whenua o te ao.

Kua whai mahi te nuinga o ngā mātua, ā, ko ētehi atu kei te whai i te mātauranga. E āhei ana te nuinga o ngā whānau ki te kōrero Māori, heoi kua ako te nuinga i tātou reo Māori hei reo tuarua. He nui ngā momo tautoko a te whānau – tautoko i ngā akoranga, te Poari, ngā haerenga, te kapa haka, ngā wānanga, ngā ohu, ngā kaupapa kōhi pūtea, te aha, te aha. Ahakoa he aha te mahi he mahi rangatira.

Nō ngā hau e whā ngā kaimahi o te kura. Kua whakaako te nuinga mō te wā roa. E whitu ngā akomanga – Te Aroha, Te Puaai, Te Piringa, Te Tumanako, Te Whakapono, Te Rangimārie me Te Atawhai. Tokoono ngā kaiako pūmau. Kotahi te kaiako mō ngā akoranga Reo Pākehā, ā, e toru rā o ia wiki te kaiako e mahi ana.

He tumuaki U3 e ārahi haere ana i te kura. 19 tau te tumuaki kua noho mai ki te kura hei tumuaki. Ka mahitahi te tumuaki rātou ko te tumuaki tuarua, tuatoru anō hoki.

Te Āhua o te Ākonga Ka Puta

Kia ngākau mahaki

Kua mōhio tātou ki tēnei āhua o te ākonga pena ka:

- Ⓞ mahi ngātahi
- Ⓞ manaaki tangata
- Ⓞ aroha tētehi ki tētehi
- Ⓞ whakaatuhia te tuākana/teina

Ngā Momo Akoranga:

- Ⓞ Ngā ūara o te kura
- Ⓞ Pūkenga hāpori
- Ⓞ Mahi tuākana/teina
- Ⓞ Pūkenga amorangi / National Young Leaders
- Ⓞ Mauri Tau
- Ⓞ Kaupapa Hauora
- Ⓞ Reo – whakanui/tautoko/hāpai
- Ⓞ Mentoring

Arohaina te reo

Kua mōhio tātou ki tēnei āhua o te ākonga pena ka:

- Ⓞ taea e te ākonga te whakaputa i ōna whakaaro mā te reo Māori
- Ⓞ eke te kounga o te reo matatini ki ngā taumata e tika ana
- Ⓞ eke te kounga o te reo Pākehā ki ngā taumata e tika ana
- Ⓞ tīmata te ākonga ki te ako i tētehi reo tuatoru

Ngā Momo Akoranga:

- Ⓞ Ngā hītori o te reo Māori
- Ⓞ Akoranga Reo Pākehā (Tau 5-8)
- Ⓞ Akoranga Reo Tuatoru (Tau 7-8)
- Ⓞ Pānui – ki, tahi, arahanga
- Ⓞ Reo ā waha – mahi whakarongo/mahi kōrero / reo arotahi / whaikōrero
- Ⓞ Tuhihi

Tū rangatira

Kua mōhio tātou ki tēnei āhua o te ākonga pena ka:

- Ⓞ matua mōhio ki tōna whakapapa, iwi, hapū, whānau, tūrangawaewae
- Ⓞ mōhio ki ngā pēhitanga o ngā iwi taketake o te ao
- Ⓞ tiaki tika i tō tātou taiao
- Ⓞ whakaaro whānui / hōhonu
- Ⓞ arohaehae i ngā kaupapa/take/te aha, te aha
- Ⓞ whai hua tana raweke i ngā momo hangarau mōhiohio
- Ⓞ mōhio ki ngā pēhitanga o te ao whānui

Ngā Momo Akoranga:

- Ⓞ Mahi Tōrangapū - ā iwi / ā motu / ao whānui
- Ⓞ Hangarau mōhiohio
- Ⓞ Kura Taiao – māra kai, hangarua, sustainability ...
- Ⓞ Pūkenga whakaaro
- Ⓞ Media influences - social networking, pūhurutanga, pēhitanga taiohi, whakatumatuma, body image ...
- Ⓞ Pūkenga Ora – tunu kai, penapena moni, whakatō kai, whai āwhina, sustainability, kaitiakitanga

Ka tū pakari hei raukura mō tōna iwi

Kua mōhio tātou ki tēnei āhua o te ākongā pena ka:

- Ⓞ matua mōhio ki tōna whakapapa, iwi, hapū, whānau, tūrangawaewae
- Ⓞ mōhio ki ngā tikanga o Waikato-Tainui, ngā tikanga o ōna ake iwi
- Ⓞ mōhio ki ngā pūrākau
- Ⓞ mārama ki ētehi take nunui o te ao
- Ⓞ ngākau nui ki ngā iwi katoa

Ngā Momo Akoranga:

- Ⓞ Noho marae – Waikato-Tainui, marae o iwi kē atu
- Ⓞ Kīngitanga
- Ⓞ Mahi Rangahau / Pakirehua
- Ⓞ Service to others
- Ⓞ Ngā Mahi ā te Rēhia – mōteatea, waiata, haka, poi, whakaari
- Ⓞ Ngā mōteatea, waiata o Waikato-Tainui
- Ⓞ Koroneihana / Poukai / Ngā Hui a te Iwi/Raupatu

Kia tupu tonu te mīharo ki tēnei mea te ako

Kua mōhio tātou ki tēnei āhua o te ākongā pena ka:

- Ⓞ whakaputa i ōna ake whakaaro
- Ⓞ hanga pātai / whakautu pātai
- Ⓞ pūmahara – reflective / whakatau ki whea ināianei
- Ⓞ whakatau whāinga
- Ⓞ mahi takitahi / mahi ngātahi

Ngā Momo Akoranga:

- Ⓞ Huarahi Ako – Learning Styles/Gardiners / Bloom's / UDL
- Ⓞ Mahi Rangahau / Pakirehua
- Ⓞ AKO
- Ⓞ Hangarau mōhiohio

Ko ngā whāinga rautaki 2020

Goals that focus on improving student achievement:

- 1) Kia piki ake te kounga o te reo Māori me ōna tikanga.
- 2) Kia eke ngā tamariki ki ā rātou ake taumata ikeike i roto i te mātauranga.

Goals for curriculum, support programmes, community partnership and teacher development:

Kia whakakaha ake ngā tikanga o te kura (school culture).

- 1) Kia whakawhānui ake te puna rauemi.
- 2) Kia whakapakari ake ngā whakawhitinga mai i te kōhanga reo ki te kura.

Goals for personnel, processes and systems:

Kei tō mātou nei kura ēnei tuhinga:

- ✚ 10 Year Property Plan
- ✚ Annual Budget
- ✚ Policies & procedures:
Health & Safety, Curriculum, Property, Financial Management, Property Management, Personnel.



	<ul style="list-style-type: none"> ④ Kuhu mai ki te kura āwhina ai hei whakapakari i te reo. ④ Āwhina te tamaiti me tāna mahi kāinga. ④ Pānui te pānui o te kura. ④ Haere mai ki ngā hui ā kura. ④ Whakatau anō te kaha o ngā mātua ki te tautoko i tō tātou reo rangatira. ④ Uiu Whānau Hou – kōrero mō te reo i te kāinga. ④ Kia ū ki te huarahi reo Māori mō ngā tamariki (Wharekura). ④ Whakatū Pō Whakamōhihio 	<p>Ongoing</p> <p>Ongoing</p> <p>Ongoing</p> <p>Ongoing</p> <p>Ongoing</p> <p>Ongoing</p> <p>Ia tau.</p> <p>2020</p>	
--	---	--	--



STRATEGIC PLAN FOR STUDENT ACHIEVEMENT 2020-2022

Whāinga 2: *Kia eke ngā tamariki ki a rātou ake taumata ikeike i roto i te mātauranga.*

Objectives	Strategies	Anticipated Duration	Self Review/ Reporting
<p>Kia whakapakari ake te reo matatini o ngā tamariki kia eke ai te katoa ki ngā taumata e tika ana (TMOA).</p>	<ul style="list-style-type: none"> ② Whakatau hōtaka ako kia angitū ngā ākongā. ② Whakangūngū kaiako mō te reo matatini, tuhituhi mō ngā tama ② Whakapakari ake ngā pūkenga tuhituhi, reo ā waha, pānui (māramatanga). ② Haere ki te mātakitaki i ngā matanga mō te whakaako reo matatini. ② Whakatau arotahinga. 	<p>2020-2022</p> <p>2020 ongoing</p> <p>Ia tau ka whiriwhiri tētehi wāhanga.</p> <p>Ongoing</p> <p>Ia tau</p>	
<p>Kia piki ake ngā mōhiotanga pāngarau kia eke ngā taumata mō ngā whenu katoa.</p>	<ul style="list-style-type: none"> ② Tuitui i ngā whenū ki te Tau. ② PLD mō nga kaiako ② Whakatau arotahinga ② Hokona ngā raumei tautoko – Matific ② Tautoko i tō tātou Kāhui Ako 	<p>2020-2022</p> <p>2020 ongoing</p> <p>Ongoing</p> <p>2020 ongoing</p> <p>2020ongoing</p>	
<p>Kia whakapakari tonu ngā mōhiotanga mō tēnei mea te ILE</p>	<ul style="list-style-type: none"> ② Mahi rangahau ② Haere ki ngā kura tiroiro ai, wānanga ai. ② Kāhui Kura PLD ② Tirohia ngā huarahi whakaako hou- Design Thinking, Passion projects, UDL etc 	<p>Ongoing</p> <p>Ongoing</p> <p>2020 ongoing</p> <p>2020 ongoing</p>	
<p>Kia whai kaha te kura ki te whakaako i ngā Mahi a te Rēhia - music, visual, drama, performing arts, kapa haka.</p>	<ul style="list-style-type: none"> ② Whakahaere i te Kowhiringa Pūmanawa – toi, pūoro, kanikani, whakaari. ② Whakapakari ake te taha auaha o ngā tamariki. ② Whakangūngū kaiako – Whakaari, Toi, Pūoro ② Whakatau kaiako e mōhio pai ana ki te whakaako, ā, he kaha nōna (specialists) 	<p>2020 ongoing</p> <p>Ongoing</p> <p>2020 ongoing</p> <p>2020 ongoing</p>	

<p>Kia ako i te Reo Tuatoru ki ngā akonga Tau 7 – 8.</p> <p>Kia tuitui ngā kaupapa Māori Motuhake, Ngā kaupapa Motuhake o Waikato-Tainui, Nga kōrero motuhake e pā ana ki TMMKKM, Te Mātauranga Māori.</p>	<ul style="list-style-type: none"> ④ Whakahaere rōpū kapa haka mō te kura – Whakataetae ā rohe, ā motu, Koroneihana, Hauraki Festival. ④ Whakataupū pūtea tautoko. ④ Whakataupū tangata matatau ki te tautoko. ④ Rapu rauemi tautoko - MOE ④ Whakatakoto hōtaka. ④ Arotakengia te hōtaka. ④ Tirohia ngā kaupapa whakaako: Tiriti o Waitangi, Declaration of Independence, Waka Raupatu, Tolerance – other cultures, immigrants, Service to others ④ Hāpai/Tautoko ngā āhuatanga motuhake o Tainui- Rikata, Koroneihana, Raupatu, Poukai. ④ Whakaako tō tātou ake hītori – Aotearoa / reo/kura ④ Haere ki tētehi marae o Tainui. ④ Ako kōrero e pā ana ki ngā mana whenua – Kāahui Ako, noho marae, marau a kura. 	<p>2020 ongoing</p> <p>Ia tau</p> <p>Ongoing</p> <p>Ongoing</p> <p>2020 ongoing Ia tau.</p> <p>Ia tau</p> <p>Ongoing</p> <p>Ia tau</p> <p>Ia tau.</p> <p>Ongoing</p> <p>Ongoing</p>	
<p>Kia hāpai tonu i ngā mahi hauora.</p>	<ul style="list-style-type: none"> ④ Whakaako / whakatakoto hōtaka mō te Hōkakatanga/Mindfulness ④ Whakatū hui mō te whānau (Hōkatanga/Te Tuakiri o te Tangata) ④ Akoranga Koiri: Project Energize ④ Hāpai i ngā uara o te kura. ④ Whakaako pūkenga hapori ④ Patuki Tahī – kaukau, kaiaka, oma whakawhiti whenua, poitūkohu, pā whutupāoro kēmu hōtoke ④ Whakarite tīma mō ngā mahi waka kōpapa - rikata. ④ Tono pūtea tautoko. ④ Tautoko ngā whāinga matua o te Tainui Kura Kāhui Ako -Tuuhauora. 	<p>Ia tau</p> <p>Ia tau</p> <p>Ia tau Ia tau</p> <p>Ongoing</p> <p>Ia tau</p> <p>Ongoing.</p> <p>Ongoing</p> <p>2020 ongoing</p> <p>Ongoing</p> <p>Ongoing</p>	

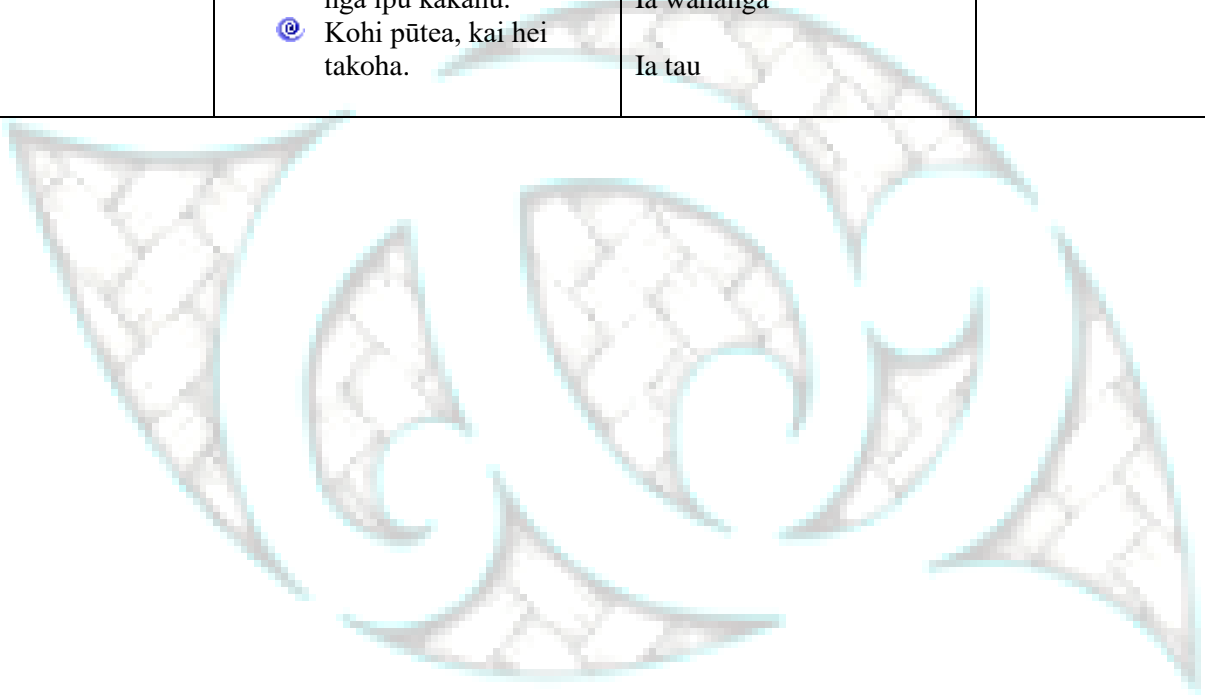
<p>Kia whai huarahi tautoko i ngā tamariki Ihumanea.</p>	<ul style="list-style-type: none"> 🕒 Pātai ki ngā mātua/whānau o ngā tamariki hou (Uiui). 🕒 Tāutungia nga tamariki me a rātou pūmanawa. 🕒 Whakatau huarahi.hōtaka tautoko/Kowhiringa pūmanawa 🕒 Whakawhānui ngā mōhiotanga o ngā kaiako. 🕒 Whakawhānui ngā mōhiotanga o ngā whānau. 🕒 Whakarite rauemi hei tautoko. 	<p>Ongoing</p> <p>Ia tau</p> <p>Ia tau</p> <p>Ia tau</p> <p>2020 ongoing</p> <p>Ia tau</p>	
<p>Kia whai whakaaro ngā tamariki ki te taiao me pēwhea te tiaki, te para kore hoki.</p>	<ul style="list-style-type: none"> 🕒 Whakatū tētehi Rōpū Taiao hou 🕒 Whakatau ngā whāinga mō ia tau – hanga māhere rautaki. 🕒 Tono putea 🕒 Mahi tahi ki ngā mātua, ngā tāngata o te hāpori. 🕒 Whakatō, whakatipu kai. 🕒 Tiaki i te pāmu noke. 🕒 Tiaki i te pūwairākau. 🕒 Mahi hangarua – pepa, ipu, pātara, kai, kēne. 🕒 Whakapai i te kura – murals/pou. 🕒 Whakaheke ngā para i roto i ngā pouaka kai 	<p>Ongoing</p> <p>2020 - 2022</p> <p>Ongoing</p> <p>Ongoing</p> <p>Ongoing</p> <p>Ongoing</p> <p>Ongoing</p> <p>Ongoing</p> <p>Ongoing</p> <p>2020 ongoing</p> <p>2020 ongoing</p>	
<p>Kia whai wāhi ngā tamariki ki te ako i te Hangarau Matihiko.</p>	<ul style="list-style-type: none"> 🕒 Whakaako i ngā āhuatanga kia noho haumarua ai ngā tamariki ki Te Ao Matihiko / Hangarau. 🕒 Whakaako pūkenga hangarau matihiko ki ngā ākonga. 🕒 Hoko raumemi hei tautoko. 🕒 Tautoko i ngā kaiako mā te whakangungu – PLD/Online/ U Learn 🕒 Whakarite akoranga hou – Squiggles, Young Animators etc. 	<p>2020 Ongoing</p> <p>2020 Ongoing</p> <p>2020 ongoing</p> <p>2020 ongoing</p> <p>2020 ongoing</p>	

**STRATEGIC PLAN FOR CURRICULUM, SUPPORT PROGRAMMES,
COMMUNITY PARTNERSHIP & TEACHER DEVELOPMENT
2020-2022**

Whāinga 1: *Kia whakakaha ake ngā tikanga o te kura (School Culture).*

Objectives	Strategies	Anticipated Duration / Responsibility	Self Review/ Reporting
Kia hāngai tika ngā mahi o te kura ki tō Te Aho Matua.	<ul style="list-style-type: none"> Ⓢ Whakatū wānanga mō ngā kaiako me te whānau whānui. Ⓢ Whakatau pūtea tautoko /Tono pūtea. Ⓢ Wānangahia tō tatou hononga ki Te Rūnanga o Ngā Kura TAM. 	<p>Ia tau.</p> <p>Ongoing</p> <p>2020</p>	
Kia whakapakari ake ngā mahi ngātahi o te kura me te whānau.	<ul style="list-style-type: none"> Ⓢ Whakahaere ohu mahi Ⓢ Akiaki ngā mātua ki te whakatū kaupapa. Ⓢ Whakatū wānanga e pā ana ki ngā marau, ngā akoranga, ngā pūkenga mātua: <ul style="list-style-type: none"> - Pānui - Te Ao Matihiko - Pāngarau etc - PB4L - Marau ā Kaura Ⓢ Whakahaere te Mana Tōpū hei rōpū tautoko/kohi pūtea mō ngā whānau Ⓢ Whai wāhi ngā mātua ki te whakamahi pūkenga ki roto i te kura – Kōwhiringa Pūmanawa, Wānanga Reo, Wānanga Te Aho Matua. Ⓢ Hui Whānau - whakatau kaupapa, hui pūkenga mātua. Ⓢ Whakanui i a Matariki 	<p>2020 ongoing</p> <p>Ongoing</p> <p>Ongoing</p> <p>2020-2022</p> <p>Ongoing</p> <p>Ongoing</p> <p>Ia wahanga.</p> <p>Ia tau.</p>	
Kia ū kaha te whānau whānui o te kura ki a tātou nei uara.	<ul style="list-style-type: none"> Ⓢ Whakatū tohu/pou ki ngā wāhi o te kura e tautoko ana i ngā uara. Ⓢ Whakanui i te hunga kaha whakatinana i ngā uara. Ⓢ Āta wānanga ngā uara 	<p>2020</p> <p>Ongoing</p> <p>Ongoing</p>	

<p>Kia ngākaunui ki tō tātou hāpori whānui.</p>	<p>– he aha i kite ai, he aha i rongoi ai, he aha i mahi ai.</p> <ul style="list-style-type: none"> Ⓢ Whakahaere wānanga (TAM) mō ngā whānau. Ⓢ Tautoko ngā mahi o te hāpori – TKR o Ngā Kauka, Te Whare Wānanga o Waikato, Te Kohinga Marama Marae, Hilda Ross etc Ⓢ Tautoko i ngā kaupapa mō te hunga rawa kore, kore ki – eg. The Serve, Foodbank etc Ⓢ Tuku kākahu mahue ki nga ipu kākahu. Ⓢ Kohi pūtea, kai hei takoha. 	<p>Ongoing</p> <p>Ongoing</p> <p>Ongoing</p> <p>Ia tau.</p> <p>Ia tau.</p> <p>Ia wahanga</p> <p>Ia tau</p>	
---	--	--	--

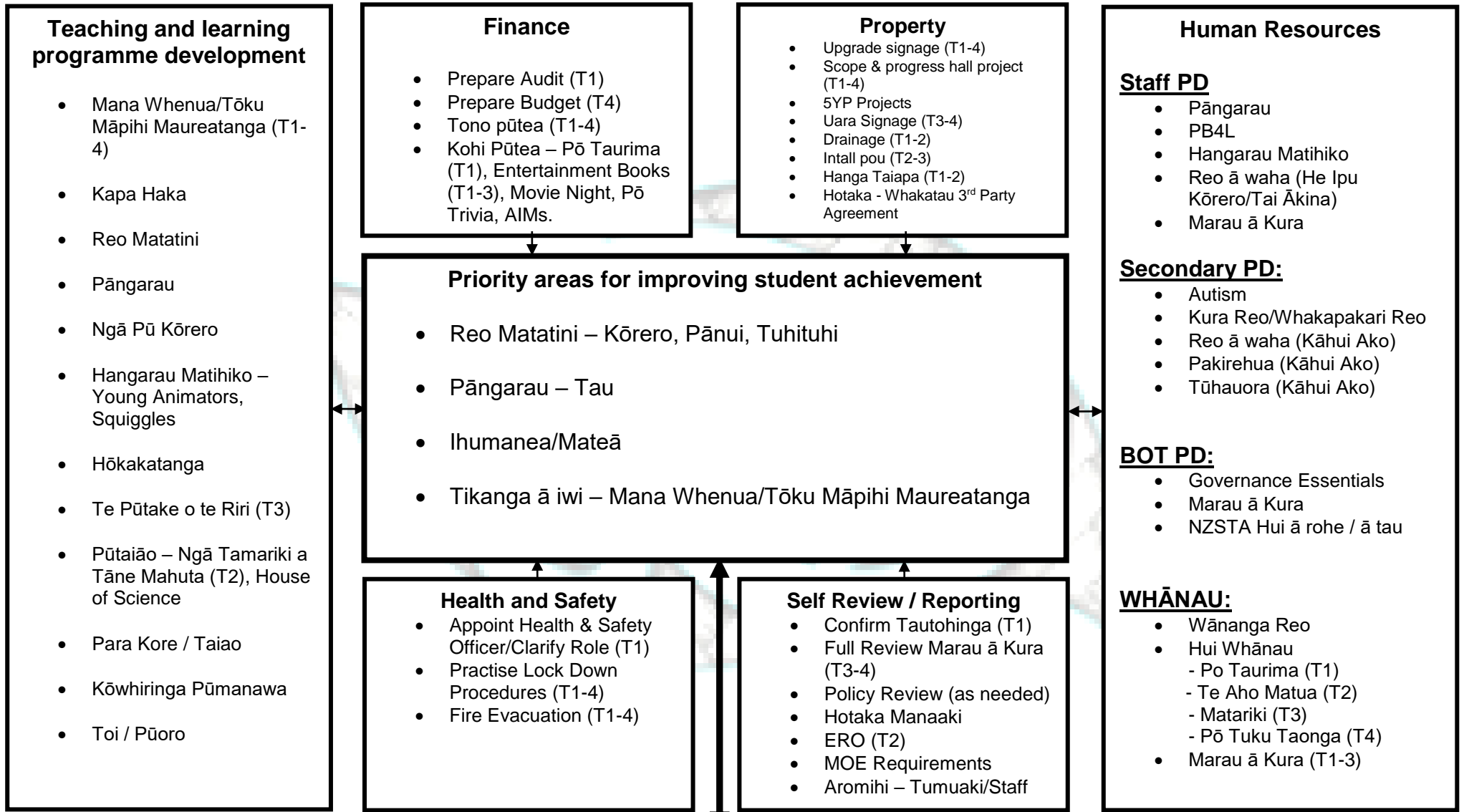


**STRATEGIC PLAN FOR CURRICULUM, SUPPORT PROGRAMMES,
COMMUNITY PARTNERSHIP & TEACHER DEVELOPMENT
2020-2022**

Whāinga 2: *Kia whakawhānui te puna rauemi.*

Objectives	Strategies	Anticipated Duration	Self Review/ Reporting
<p>Kia tiroiro (scope) ki ngā mahi mō te whakatū hōro.</p>	<ul style="list-style-type: none"> ☉ Mahitahi ki a WPS (Waikato Property Services) ☉ Mahitahi ki a Versatile ☉ Kohi whakaaro mō te āhua me ngā momo mahi ki roto. ☉ Whakatau te āhua. ☉ Whakatau te utu. ☉ Whakatau pūtea. ☉ Kōrero tahi ki te MOE. ☉ Tirohia ētehi atu kura me ō rātou hōro. ☉ Tirohia te taha pūtea – he aha ngā wāhi tautoko ā pūtea (Mana Tōpū) ☉ Me whakarite māhere mahi. ☉ Hanga te hōro. 	<p>2020 – 2022</p> <p>2020-2022</p> <p>2020</p> <p>2020</p> <p>2020</p> <p>2020</p> <p>2020 ongoing</p> <p>2020</p> <p>2020-2020</p> <p>2020</p> <p>2021-2022</p>	

Tōku Māpihi Maurea KKM - Mahere ā Tau 2020



<p>Communication</p> <p>Kura Pānui (TT-4) Pō Tūtaki Kaiako (T1) Student Lead Conferences/See Saw (T3) Puka Mata / Whārangī Ipurangī Purongo Tamaiti (T2 & 4) Class Doji</p>	<p>Partnership with the community Collaboration</p> <p>Te Aho Matua Wānanga Noho Marae (T2) Rikata / Kingitanga Day / Koroneihana Hui Whānau Hononga ki ngā Mana Whenua</p>	<p>Consultation</p> <p>Marau ā Kura ERO Kaupapa Here</p>
---	--	---

Tōku Māpihi Maurea Kura Kaupapa Māori
2020 ANNUAL PLAN – REO MATATINI AIMS AND TARGETS (PĀNUI)

Strategic Aim:

All learners are able to access Te Marautanga o Aotearoa (TMOA) as evidenced by progress and achievement in relation to Ngā Taumata o Te Marautanga o Aotearoa.

Annual Aim:

All students who require a tailored programme of support will make the accelerated progress they need to achieve or exceed expectations in relation to Ngā Taumata o Te Marautanga o Aotearoa by the end of the year.

Evidence/Baseline 2019 data:

Analysis of kura wide data shows that a significant majority of learners are achieving or exceeding expectations in relation to TMOA – PĀNUI:

- Seven out of eleven Tau 0 learners require a tailored learning programme to ensure they experience accelerated success in Tau 1 to achieve success in relation to TMOA.
- Seven out of eleven in Tau 1 learners require a tailored learning programme to ensure they experience accelerated success in Tau 2 to achieve success in relation to TMOA.
- Five out of sixteen in Tau 2 learners require a tailored learning programme to ensure they experience accelerated success in Tau 3 to achieve success in relation to TMOA.
- One out of seventeen Tau 5 learners require a tailored learning programme to ensure they experience accelerated success in Tau 6 to achieve success in relation to TMOA.

Targets:

Twenty learners across all year levels require more support to achieve or exceed TMOA Reo Matatini (Pānui) expectations. There is a need for a more tailored programme of support to be put in place by the end of Term 1.

- All Tau 1 learners who were progressing towards achieving TMOA Pānui will be achieving or exceeding expectations for TMOA Pānui KKa – KKa/KKe+ by the end of Tau 2.
- All Tau 2 learners who were progressing towards achieving TMOA Pānui will be achieving or exceeding expectations for TMOA Pānui KKi – KKi/KPa+ by the end of Tau 3.
- All Tau 3 learners who were progressing towards achieving TMOA Pānui will be achieving or exceeding expectations for TMOA Pānui KPa – KPa/KPe+ by the end of Tau 4.
- All Tau 4 learners who were progressing towards achieving TMOA Pānui will be achieving or exceeding expectations for TMOA Pānui KPe – KPe/KPi+ by the end of Tau 5.
- All Tau 5 learners who were progressing towards achieving TMOA Pānui will be achieving or exceeding expectations for TMOA Pānui KPi – KPi/KPo+ by the end of Tau 6.
- All Tau 6 learners who were progressing towards achieving TMOA Pānui will be achieving or exceeding expectations for TMOA Pānui KPo – KPo/M+ by the end of Tau 7.
- All Tau 7 learners who were progressing towards achieving TMOA Pānui will be achieving or exceeding expectations for TMOA Pānui Miro - Miro+ by the end of Tau 8.

Actions to achieve targets	Timing	Responsibility	Resourcing
1. Review progress and achievement data with staff for all learners who require tailored support.	Term 1, 2020	Tumuaki/Pouako	Nil
2. Determine the learning needs of each of these learners (20) and implement tailored programmes to meet their individual needs.	Term 1-4, 2020	Pouako/Kaiako/ Kaiawhina/Whānau	Teacher Aid Support In Class Support RTLB Referral
3. Ongoing monitoring of identified learners at Hui Kura Tuākana/Teina. Report to Hui Pouako ia wāhanga.	Ongoing throughout the year	Kaiako/Pouako/Tumuaki	-
4. Review and refine current programmes in pānui and build on best practice.	Term 1 - 4, 2020	Tumuaki/Lead Kaiako	-
5. Establish pānui tuakana-teina support for learners.	Ongoing throughout the year	Kaiako	-
6. Work with whānau to support home reading programme.	Ongoing throughout the year	Kaiako/Whānau/RTLB	
7. PLD aligned to specific teacher identified needs.	Ongoing throughout the year	Tumuaki/Lead Teacher	

Tōku Māpihi Maurea Kura Kaupapa Māori
2020 ANNUAL PLAN – REO MATATINI AIMS AND TARGETS (TUHITUHI)

Strategic Aim:

All learners are able to access Te Marautanga o Aotearoa (TMOA) as evidenced by progress and achievement in relation to Ngā Taumata o Te Marautanga o Aotearoa.

Annual Aim:

All students who require a tailored programme of support will make the accelerated progress they need to achieve or exceed expectations in relation to Ngā Taumata o Te Marautanga o Aotearoa - Reo Matatini by the end of the year.

Evidence/baseline 2019 data:

Analysis of kura wide data shows that a significant majority of learners are achieving or exceeding expectations in relation to TMOA – TUHITUHI

- Six out of eleven Tau 0 learners require a tailored learning programme to ensure they experience accelerated success in Tau 1 to achieve success in relation to TMOA.
- Four out of eleven Tau 1 learners require a tailored learning programme to ensure they experience accelerated success in Tau 2 to achieve success in relation to TMOA.
- Three out of sixteen Tau 2 learners require a tailored learning programme to ensure they experience accelerated success in Tau 3 to achieve success in relation to TMOA.
- Six out of sixteen Tau 3 learners require a tailored learning programme to ensure they experience accelerated success in Tau 4 to achieve success in relation to TMOA.
- Seven out of twelve Tau 4 learners require a tailored learning programme to ensure they experience accelerated success in Tau 5 to achieve success in relation to TMOA.
- One out of seventeen Year 5 learners require a tailored learning programme programme to ensure they experience accelerated success in Tau 6 to achieve success in relation to TMOA.
- Three out of thirteen Tau 6 learners require a tailored learning programme to ensure they experience accelerated success in Tau 7 to achieve success in relation to TMOA.
- Three out of twelve Tau 7 learners require a tailored learning programme to ensure they experience accelerated success in Tau 8 to achieve success in relation to TMOA.

Targets:

Thirty three learners across all year levels require more support to achieve or exceed TMOA Reo Matatini (Tuhituhi) expectations. There is a need for a more tailored programme of support to be put in place by the end of Term 1.

- All Tau 1 learners who were progressing towards achieving NWRM Tuhituhi will be achieving or exceeding expectations for TMOA Tuhituhi 1 He Pakari 2 / Ka Whai Huruuru by the end of Tau 2.
- All Tau 2 learners who were progressing towards achieving TMOA Tuhituhi will be achieving or exceeding expectations for TMOA Tuhituhi Taumata 2 /Ka Whai Huruuru-Ka Marewa by the end of Tau 3.
- All Tau 3 learners who were progressing toward achieving TMOA Tuhituhi will be achieving or exceeding expectations for TMOA Tuhituhi Taumata 2-3/ Ka Whai Huruuru/ Ka Marewa by the end of Tau 4.
- All Tau 4 learners who were progressing toward achieving TMOA Tuhituhi will be achieving or exceeding expectations for TMOA Tuhituhi Taumata 3/ Ka Marewa by the end of Tau 5.
- All Tau 5 learners who were progressing toward achieving TMOA Tuhituhi will be achieving or exceeding expectations for TMOA Tuhituhi Taumata 3-4 / Ka Marewa+ by the end of Tau 6.

- All Tau 6 learners who were progressing towards achieving TMOA Tuhituhi will be achieving or exceeding expectations for TMOA Tuhituhi Taumata 4 / Ka Marewa/Ka Rere by the end of Tau 7.
- All Tau 7 learners who were progressing towards achieving TMOA Tuhituhi will be achieving or exceeding expectations for Tuhituhi Taumata 4-5 / Ka Rere by the end of Tau 8.

Actions to achieve targets	Timing	Responsibility	Resourcing
1. Review progress and achievement data with staff for all learners who require tailored support.	Term 1-4, 2020	Tumuaki/Lead Teacher	Nil
2. Determine the learning needs of each of these learners (33) and implement tailored programmes to meet their individual needs.	Term 1, 2020	Pouako/Kaiako/ Kaiawhina/Whānau	Teacher Aid Support In Class Support RTL B Referral
3. Ongoing monitoring of these learners at Hui Kura Teina/Tuakana. Report to Hui Pouako ia wāhanga.	Ongoing throughout the year	Kaiako/Pouako/ Tumuaki	-
4. Review and refine current programmes in tuhituhi and build on best practice.	Term 1 - 4, 2020	Tumuaki/Lead Teacher	-
5. Work with whānau to support Tuhituhi Programme.	Ongoing throughout the year	Kaiako/Whānau/ RTL B/LSC	
6. PD aligned to specific teacher identified needs with an emphasis on engaging boys with tuhituhi.	Ongoing throughout the year	Tumuaki/Lead Teacher	

Tōku Māpihi Maurea Kura Kaupapa Māori
2020 ANNUAL PLAN – REO MATATINI AIMS AND TARGETS (KŌRERO)

Strategic Aim:

All learners are able to access Te Marautanga o Aotearoa (TMOA) as evidenced by progress and achievement in relation to Ngā Taumata o Te Marautanga o Aotearoa.

Annual Aim:

All students who require a tailored programme of support will make the accelerated progress they need to achieve or exceed expectations in relation to Ngā Taumata o Te Marautanga o Aotearoa – Kōrero.

Evidence/baseline 2019 data:

Analysis of kura wide data shows that a significant majority of learners are achieving or exceeding expectations in relation to TMOA – KŌRERO

- Two out of sixteen Tau 2 learners require a tailored learning programme to ensure they experience accelerated success in Tau 3 to achieve success in relation to TMOA.
- One out of seventeen Tau 5 learners require a tailored learning programme to ensure they experience accelerated success in Tau 6 to achieve success in relation to TMOA.
- Six out of twelve Tau 7 learners require a tailored learning programme to ensure they experience accelerated success in Tau 8 to achieve success in relation to TMOA.

Targets:

Nine learners across all year levels require more support to achieve or exceed TMOA Reo Matatini (Reo ā waha) expectations . There is a need for a more tailored programme of support to be put in place by the end of Term 1.

- All Tau 1 learners who are progressing towards achieving TMOA Reo ā waha will be achieving or exceeding expectations for TMOA Reo ā waha Taumata 1 / He Pakari – He Pakari 2 by the end of Tau 2.
- All Tau 2 learners who are progressing towards achieving TMOA Reo ā waha will be achieving or exceeding expectations for TMOA Reo ā waha Taumata 2 by the end of Tau 3.
- All Tau 3 learners who are progressing towards achieving TMOA Reo ā waha will be achieving or exceeding expectations for TMOA Reo ā waha Taumata 2-3 by the end of Tau 4.
- All Tau 4 learners who are progressing towards achieving TMOA Reo ā waha will be achieving or exceeding expectations for TMOA Reo ā waha Taumata 3 by the end of Tau 5.
- All Tau 5 learners who are progressing towards achieving TMOA Reo ā waha will be achieving or exceeding expectations for TMOA Reo ā waha Taumata 3-4 by the end of Tau 6.
- All Tau 6 learners who were progressing towards achieving TMOA Reo ā waha will be achieving or exceeding expectations for TMOA Reo ā waha Taumata 4 by the end of Tau 7.
- All Tau 7 learners who were progressing towards achieving TMOA Reo ā waha will be achieving or exceeding expectations for TMOA Reo ā waha Taumata 4-5 by the end of Tau 8.

Actions to achieve targets	Timing	Responsibility	Resourcing
1. Review progress and achievement data with staff for all learners who require tailored support.	Term 1-4, 2020	Tumuaki/Lead Teacher	Nil
2. Determine the learning needs of each of these learners (9) and implement tailored programmes to meet their individual needs.	Term 1, 2020	Pouako/Kaiako/ Kaiawhina/Whānau/ LSC	Teacher Aid Support RTLB referrals
3. Ongoing monitoring of these learners at Whānau Kura Tuakana/Teina. Report to Hui Pouako ia wāhanga.	Ongoing throughout the year	Kaiako/Pouako/ Tumuaki	-
4. Review and refine current programmes in Reo ā waha and build on best practice including mahi whakarongo/kōrero.	Term 1 - 4, 2019	Tumuaki/Lead Teacher	-
5. Work with whānau to increase use of reo Māori at home.	Ongoing throughout the year	BOT/Kura/Whānau	
6. Work with whānau in and around ways of supporting tamariki at home with Reo ā waha.	Term 1-4, 2020	Tumuaki/Lead Teacher/RTLB/ Whānau/LSC	-
8. PLD/Kaahui Ako aligned to specific teacher identified needs/moderation.	Ongoing throughout the year	Tumuaki/Lead Teacher	He Ipu Kōrero Tai Ākina \$600 (TBC)

Tōku Māpihi Maurea Kura Kaupapa Māori
2020 ANNUAL PLAN – PĀNGARAU AIMS AND TARGETS (TAU)

Strategic Aim:

All learners are able to access Te Marautanga o Aotearoa (TMOA) as evidenced by progress and achievement in relation to Ngā Taumata o Te Marautanga o Aotearoa.

Annual Aim:

All students who require a tailored programme of support will make the accelerated progress they need to achieve or exceed expectations in relation to Ngā Taumata o Te Marautanga o Aotearoa by the year.

Evidence/baseline 2019 data:

Analysis of kura wide data shows that a significant majority of learners are achieving or exceeding expectations in relation to TMOA – TAU

- One out of eleven Tau 0 learners require a tailored learning programme to ensure they experience accelerated success in Tau 1 to achieve success in relation to TMOA.
- One out of sixteen Tau 1 learners require a tailored learning programme to ensure they experience accelerated success in Tau 2 to achieve success in relation to TMOA.
- Four out of sixteen Tau 3 learners require a tailored learning programme to ensure they experience accelerated success in Tau 4 to achieve success in relation to TMOA.
- Six out of twelve Tau 4 learners require a tailored learning programme to ensure they experience accelerated success in Tau 5 to achieve success in relation to TMOA.
- Seven out of seventeen Tau 5 learners require a tailored learning programme to ensure they experience accelerated success in Tau 6 to achieve success in relation to TMOA.
- Six out of thirteen Tau 6 learners require a tailored learning programme to ensure they experience accelerated success in Tau 7 to achieve success in relation to TMOA.
- Five out of Twelve Tau 7 learners require a tailored learning programme to ensure they experience accelerated success in Tau 8 to achieve success in relation to TMOA

Targets:

Thirty learners across all year levels require more support to achieve or exceed TMOA Pāngarau (Tau) expectations. There is a need for a more tailored programme of support to be put in place by the end of Term 1.

- All Tau 1 learners who were progressing towards achieving TMOA Pāngarau will be achieving or exceeding expectations for TMOA Kaupae 3-4 by the end of Tau 2.
- All Tau 2 learners who were progressing towards achieving TMOA Pāngarau will be achieving or exceeding expectations for TMOA Pāngarau 2a / Kaupae 5 by the end of Tau 3.
- All Tau 3 learners who were progressing towards achieving TMOA Pāngarau will be achieving or exceeding expectations for TMOA Pāngarau 2e / Kaupae 5+ by the end of Tau 4.
- All Tau 4 learners who were progressing towards achieving TMOA Pāngarau will be achieving or exceeding expectations for TMOA Pāngarau 3a/Kaupae 6 by the end of Tau 5.
- All Tau 5 learners who were progressing towards achieving TMOA Pāngarau will be achieving or exceeding expectations for TMOA Pāngarau 3e /Kaupae 6+ by the end of Tau 6.
- All Tau 6 learners who were progressing towards achieving TMOA Pāngarau will be achieving or exceeding expectations for NWRM Pāngarau 4a /Kaupae 7 by the end of Tau 7
- All Tau 7 learners who were progressing towards achieving TMOA Pāngarau 6 will be achieving or exceeding expectations for TMOA Pāngarau 4e /Kaupae 7+ by the end of Tau 8.

Actions to achieve targets	Timing	Responsibility	Resourcing
1. Review progress and achievement data with staff for all learners who require tailored support.	Term 1-4, 2020	Tumuaki/Lead Teacher	Nil
2. Determine the learning needs of each of these learners (30) and implement tailored programmes to meet their individual needs.	Term 1-4, 2020	Pouako/Kaiako/ Kaiawhina/ Whānau/LSC	Teacher Aid Support
3. Review coverage and balance of the Pāngarau strands. Develop and implement a balanced curriculum plan.	Term 1, 2020	Tumuaki/Lead Teacher	-
4. Develop PLD plan based on needs analysis - whole kura, linked to annual targets.	Term 1-4, 2020	Tumuaki/Lead Teacher	-
5. Enrol all Tau 5-8 ākonga in Matific (online programme).	Term 1-4	Lead Teacher	\$864.00
6. MOE PLD aligned to needs in year levels – Tau (in relation to data), specific teacher identified needs.	Ongoing throughout the year	Tumuaki/Lead Teacher	

